

NOTES:

APPLICANT REQUESTS FLEXIBILITY TO VARY THE LOCATION AND DESIGN OF ALL INTERIOR COMPONENTS, INCLUDING PARTITIONS, STRUCTURAL SLABS, DOORS, RETAIL ENTRANCES, HALLWAYS, COLUMNS, STAIRWAYS, AND MECHANICAL ROOMS, PROVIDED THAT THE VARIATIONS DON'T CHANGE THE EXTERIOR CONFIGURATION OF THE BUILDING.

PHASE A & B OF THE PROJECT MAY BE BUILT SIMULTANEOUSLY OR IN PHASES.

THE DESIGN AND LAYOUT OF THE POOL, TRELIS, COURTYARDS, AND OUTDOOR AMENITY AREAS ARE PRELIMINARY AND ARE SHOWN FOR ILLUSTRATIVE PURPOSES ONLY. FINAL LAYOUTS MAY VARY.

- LOW PATH LIGHTING FOR EGRESS
- DOWNLIGHTS OR WALL SCONCES
- OVERHEAD DOWNLIGHTS, TO COMPLY WITH 1:1 SETBACK REQUIREMENTS

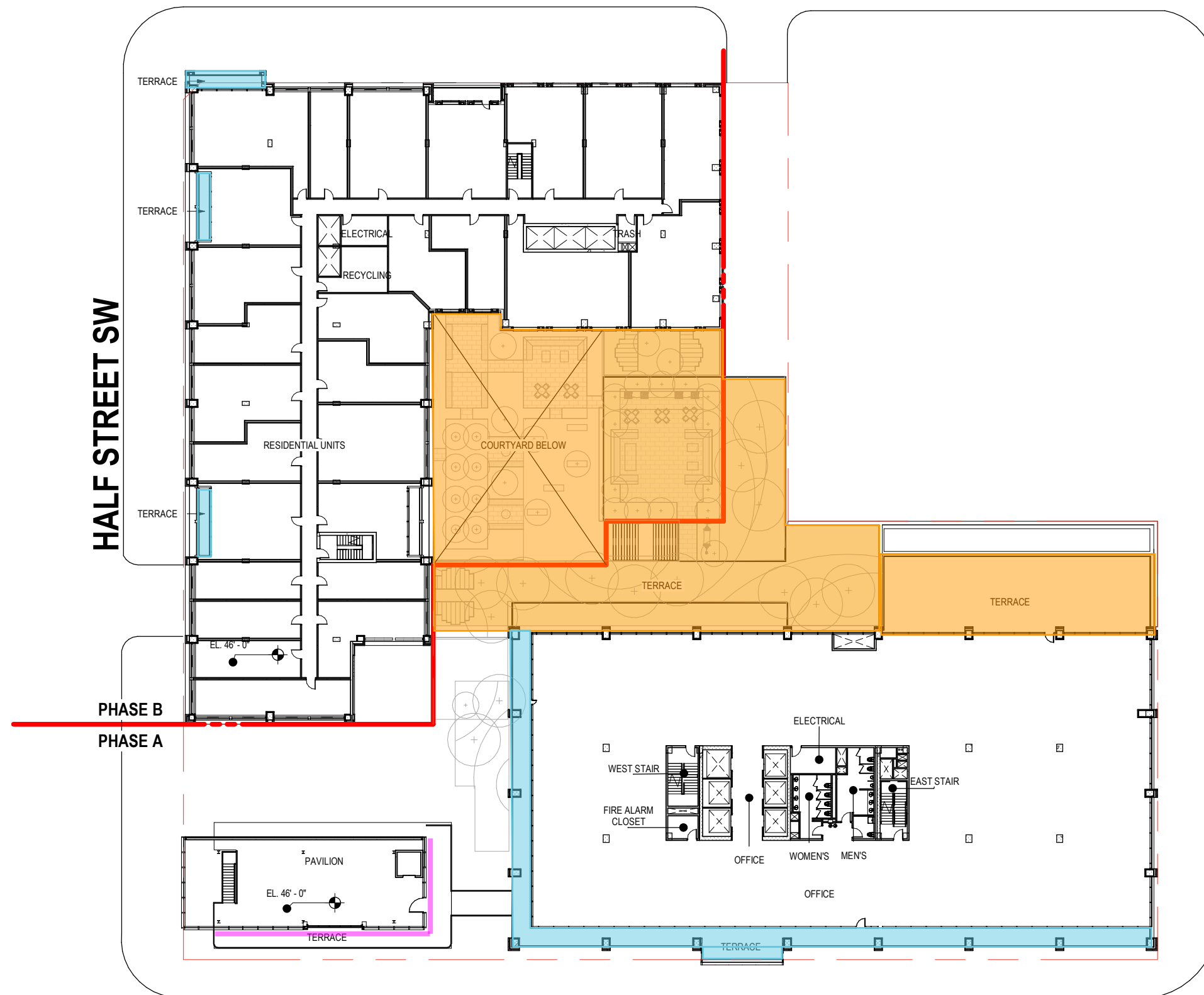
The lighting shown on these plans is functional illumination for building occupants. There will be no architectural facade lighting.

SOUTH CAPITOL ST SW

HALF STREET SW



L STREET SW



NOTES:

APPLICANT REQUESTS FLEXIBILITY TO VARY THE LOCATION AND DESIGN OF ALL INTERIOR COMPONENTS, INCLUDING PARTITIONS, STRUCTURAL SLABS, DOORS, RETAIL ENTRANCES, HALLWAYS, COLUMNS, STAIRWAYS, AND MECHANICAL ROOMS, PROVIDED THAT THE VARIATIONS DON'T CHANGE THE EXTERIOR CONFIGURATION OF THE BUILDING.

PHASE A & B OF THE PROJECT MAY BE BUILT SIMULTANEOUSLY OR IN PHASES.

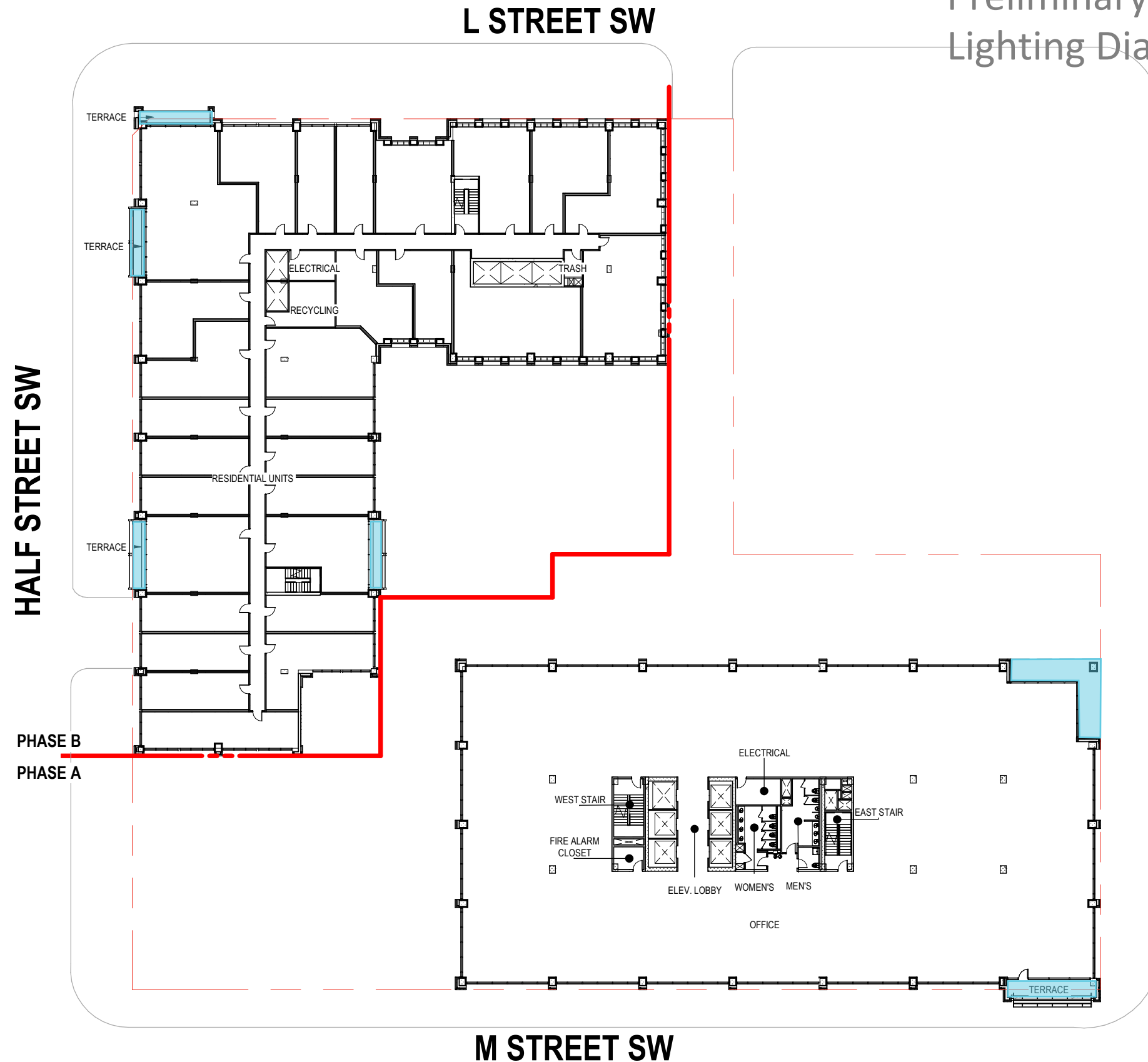
THE DESIGN AND LAYOUT OF THE POOL, TRELIS, COURTYARDS, AND OUTDOOR AMENITY AREAS ARE PRELIMINARY AND ARE SHOWN FOR ILLUSTRATIVE PURPOSES ONLY. FINAL LAYOUTS MAY VARY.

- LOW PATH LIGHTING FOR EGRESS
- RECESSED DOWNLIGHTS OR WALL SCONCES
- OVERHEAD DOWNLIGHTS, TO COMPLY WITH 1:1 SETBACK REQUIREMENTS

The lighting shown on these plans is functional illumination for building occupants. There will be no architectural facade lighting.

SOUTH CAPITOL ST SW

M STREET SW



NOTES:

APPLICANT REQUESTS FLEXIBILITY TO VARY THE LOCATION AND DESIGN OF ALL INTERIOR COMPONENTS, INCLUDING PARTITIONS, STRUCTURAL SLABS, DOORS, RETAIL ENTRANCES, HALLWAYS, COLUMNS, STAIRWAYS, AND MECHANICAL ROOMS, PROVIDED THAT THE VARIATIONS DON'T CHANGE THE EXTERIOR CONFIGURATION OF THE BUILDING.

PHASE A & B OF THE PROJECT MAY BE BUILT SIMULTANEOUSLY OR IN PHASES.

- LOW PATH LIGHTING FOR EGRESS
- RECESSED DOWNLIGHTS OR WALL SCONCES
- OVERHEAD DOWNLIGHTS, TO COMPLY WITH 1:1 SETBACK REQUIREMENTS

The lighting shown on these plans is functional illumination for building occupants. There will be no architectural facade lighting.



Lighting Diagram

NOTES:

APPLICANT REQUESTS FLEXIBILITY TO VARY THE LOCATION AND DESIGN OF ALL INTERIOR COMPONENTS, INCLUDING PARTITIONS, STRUCTURAL SLABS, DOORS, RETAIL ENTRANCES, HALLWAYS, COLUMNS, STAIRWAYS, AND MECHANICAL ROOMS, PROVIDED THAT THE VARIATIONS DON'T CHANGE THE EXTERIOR CONFIGURATION OF THE BUILDING.

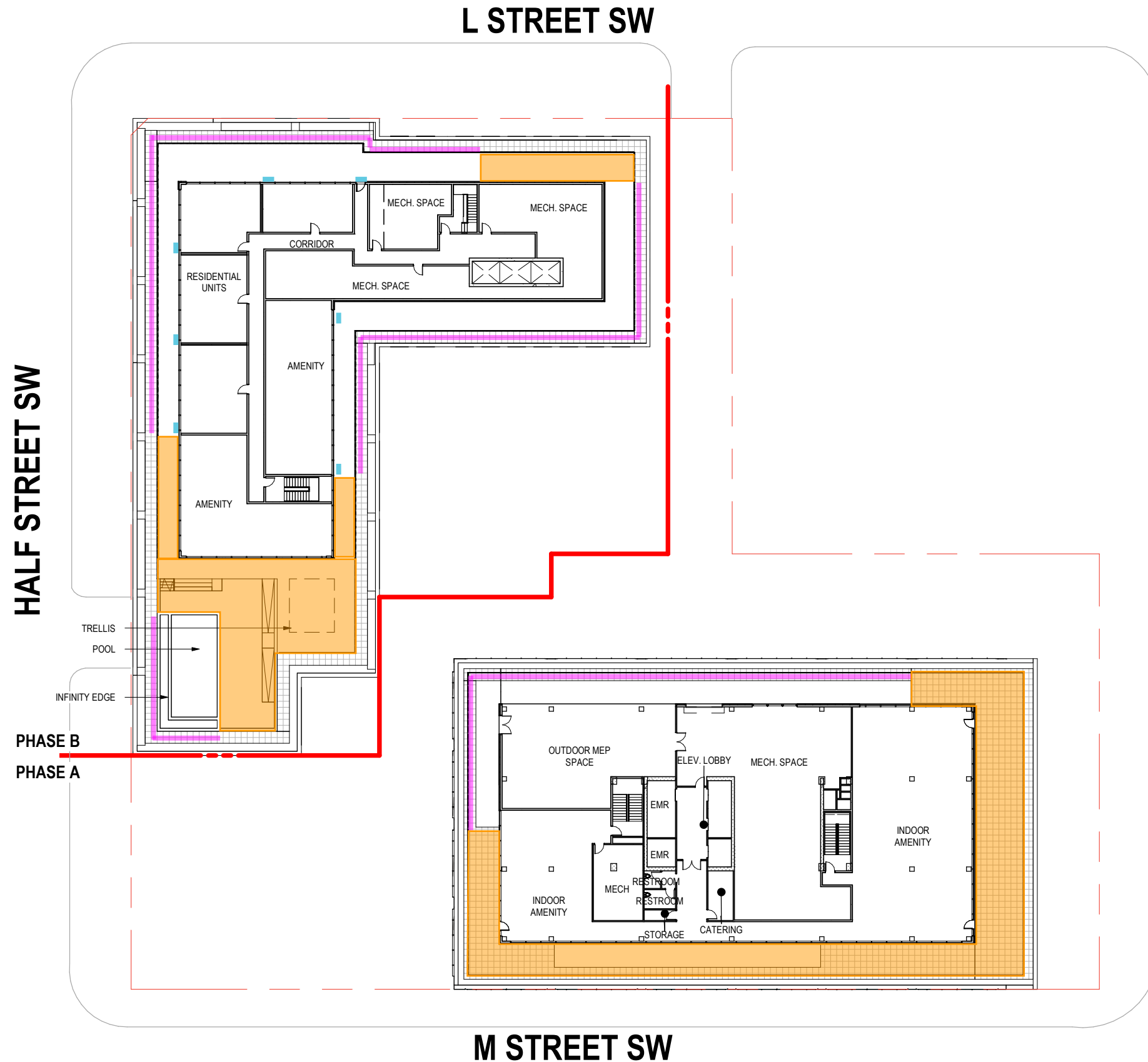
PHASE A & B OF THE PROJECT MAY BE BUILT SIMULTANEOUSLY OR IN PHASES.



- LOW PATH LIGHTING FOR EGRESS
- RECESSED DOWNLIGHTS OR WALL SCONCES
- OVERHEAD DOWNLIGHTS, TO COMPLY WITH 1:1 SETBACK REQUIREMENTS

The lighting shown on these plans is functional illumination for building occupants. There will be no architectural facade lighting.





NOTES:

APPLICANT REQUESTS FLEXIBILITY TO VARY THE LOCATION AND DESIGN OF ALL INTERIOR COMPONENTS, INCLUDING PARTITIONS, STRUCTURAL SLABS, DOORS, RETAIL ENTRANCES, HALLWAYS, COLUMNS, STAIRWAYS, AND MECHANICAL ROOMS, PROVIDED THAT THE VARIATIONS DON'T CHANGE THE EXTERIOR CONFIGURATION OF THE BUILDING.

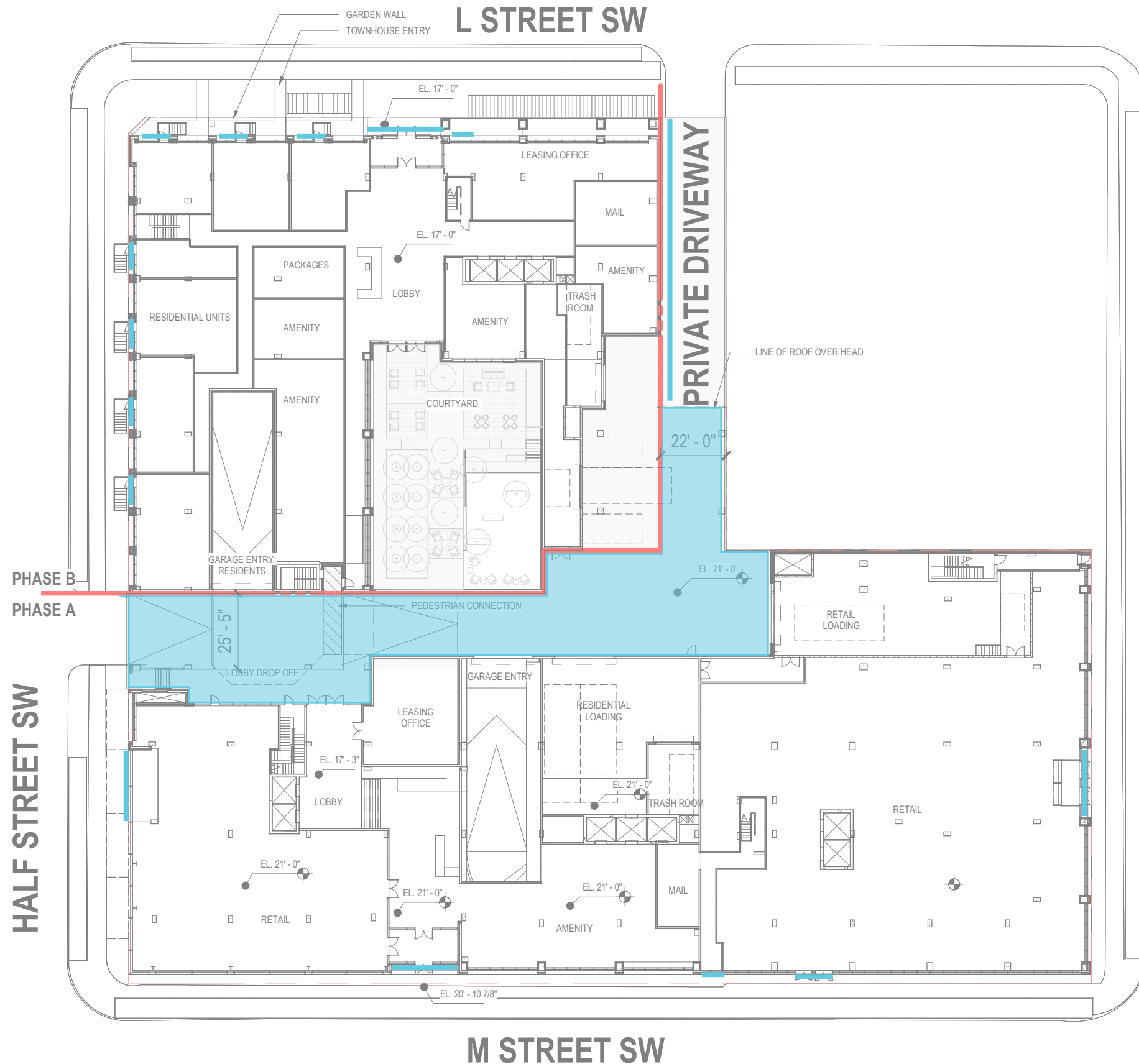
PHASE A & B OF THE PROJECT MAY BE BUILT SIMULTANEOUSLY OR IN PHASES.

THE DESIGN AND LAYOUT OF THE POOL, TRELIS, COURTYARDS, AND OUTDOOR AMENITY AREAS ARE PRELIMINARY AND ARE SHOWN FOR ILLUSTRATIVE PURPOSES ONLY. FINAL LAYOUTS MAY VARY.

- LOW PATH LIGHTING FOR EGRESS
- RECESSED DOWNLIGHTS OR WALL SCONCES
- OVERHEAD DOWNLIGHTS, TO COMPLY WITH 1:1 SETBACK REQUIREMENTS

The lighting shown on these plans is functional illumination for building occupants. There will be no architectural facade lighting.





NOTES:

APPLICANT REQUESTS FLEXIBILITY TO VARY THE LOCATION AND DESIGN OF ALL INTERIOR COMPONENTS, INCLUDING PARTITIONS, STRUCTURAL SLABS, DOORS, RETAIL ENTRANCES, HALLWAYS, COLUMNS, STAIRWAYS, AND MECHANICAL ROOMS, PROVIDED THAT THE VARIATIONS DON'T CHANGE THE EXTERIOR CONFIGURATION OF THE BUILDING.

PHASE A & B OF THE PROJECT MAY BE BUILT SIMULTANEOUSLY OR IN PHASES.

THE DESIGN AND LAYOUT OF THE POOL, TRELIS, COURTYARDS, AND OUTDOOR AMENITY AREAS ARE PRELIMINARY AND ARE SHOWN FOR ILLUSTRATIVE PURPOSES ONLY. FINAL LAYOUTS MAY VARY.

- LOW PATH LIGHTING FOR EGRESS
- DOWNLIGHTS OR WALL SCONCES
- OVERHEAD DOWNLIGHTS, TO COMPLY WITH 1:1 SETBACK REQUIREMENTS

The lighting shown on these plans is functional illumination for building occupants. There will be no architectural facade lighting.



NOTES:

APPLICANT REQUESTS FLEXIBILITY TO VARY THE LOCATION AND DESIGN OF ALL INTERIOR COMPONENTS, INCLUDING PARTITIONS, STRUCTURAL SLABS, DOORS, RETAIL ENTRANCES, HALLWAYS, COLUMNS, STAIRWAYS, AND MECHANICAL ROOMS, PROVIDED THAT THE VARIATIONS DON'T CHANGE THE EXTERIOR CONFIGURATION OF THE BUILDING.

PHASE A & B OF THE PROJECT MAY BE BUILT SIMULTANEOUSLY OR IN PHASES.

THE DESIGN AND LAYOUT OF THE POOL, TRELIS, COURTYARDS, AND OUTDOOR AMENITY AREAS ARE PRELIMINARY AND ARE SHOWN FOR ILLUSTRATIVE PURPOSES ONLY. FINAL LAYOUTS MAY VARY.

- LOW PATH LIGHTING FOR EGRESS
- RECESSED DOWNLIGHTS OR WALL SCONCES
- OVERHEAD DOWNLIGHTS, TO COMPLY WITH 1:1 SETBACK REQUIREMENTS

The lighting shown on these plans is functional illumination for building occupants. There will be no architectural facade lighting.

SOUTH CAPITOL ST SW

HALF STREET SW

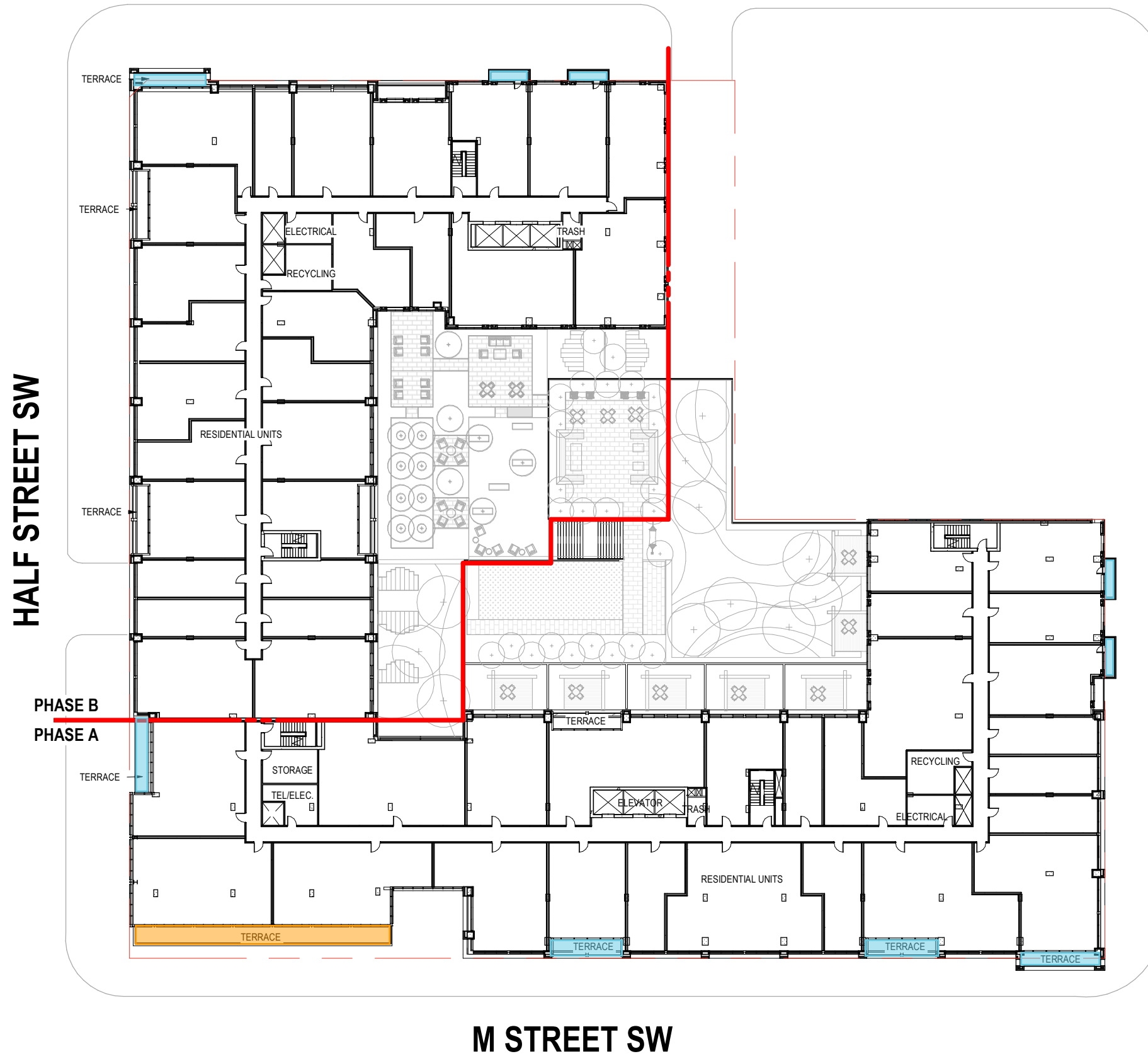


MEANINGFUL CONNECTION

PHASE B
PHASE A

EL. 36'-0"

L STREET SW



NOTES:

APPLICANT REQUESTS FLEXIBILITY TO VARY THE LOCATION AND DESIGN OF ALL INTERIOR COMPONENTS, INCLUDING PARTITIONS, STRUCTURAL SLABS, DOORS, RETAIL ENTRANCES, HALLWAYS, COLUMNS, STAIRWAYS, AND MECHANICAL ROOMS, PROVIDED THAT THE VARIATIONS DON'T CHANGE THE EXTERIOR CONFIGURATION OF THE BUILDING.

PHASE A & B OF THE PROJECT MAY BE BUILT SIMULTANEOUSLY OR IN PHASES.

THE DESIGN AND LAYOUT OF THE POOL, TRELIS, COURTYARDS, AND OUTDOOR AMENITY AREAS ARE PRELIMINARY AND ARE SHOWN FOR ILLUSTRATIVE PURPOSES ONLY. FINAL LAYOUTS MAY VARY.

- LOW PATH LIGHTING FOR EGRESS
- RECESSED DOWNLIGHTS OR WALL SCONCES
- OVERHEAD DOWNLIGHTS, TO COMPLY WITH 1:1 SETBACK REQUIREMENTS

The lighting shown on these plans is functional illumination for building occupants. There will be no architectural facade lighting.



L STREET SW



NOTES:

APPLICANT REQUESTS FLEXIBILITY TO VARY THE LOCATION AND DESIGN OF ALL INTERIOR COMPONENTS, INCLUDING PARTITIONS, STRUCTURAL SLABS, DOORS, RETAIL ENTRANCES, HALLWAYS, COLUMNS, STAIRWAYS, AND MECHANICAL ROOMS, PROVIDED THAT THE VARIATIONS DON'T CHANGE THE EXTERIOR CONFIGURATION OF THE BUILDING.

PHASE A & B OF THE PROJECT MAY BE BUILT SIMULTANEOUSLY OR IN PHASES.

THE DESIGN AND LAYOUT OF THE POOL, TRELIS, COURTYARDS, AND OUTDOOR AMENITY AREAS ARE PRELIMINARY AND ARE SHOWN FOR ILLUSTRATIVE PURPOSES ONLY. FINAL LAYOUTS MAY VARY.

- LOW PATH LIGHTING FOR EGRESS
- RECESSED DOWNLIGHTS OR WALL SCONCES
- OVERHEAD DOWNLIGHTS, TO COMPLY WITH 1:1 SETBACK REQUIREMENTS

The lighting shown on these plans is functional illumination for building occupants. There will be no architectural facade lighting.

SOUTH CAPITOL ST SW

HALF STREET SW

M STREET SW





NOTES:

APPLICANT REQUESTS FLEXIBILITY TO VARY THE LOCATION AND DESIGN OF ALL INTERIOR COMPONENTS, INCLUDING PARTITIONS, STRUCTURAL SLABS, DOORS, RETAIL ENTRANCES, HALLWAYS, COLUMNS, STAIRWAYS, AND MECHANICAL ROOMS, PROVIDED THAT THE VARIATIONS DON'T CHANGE THE EXTERIOR CONFIGURATION OF THE BUILDING.

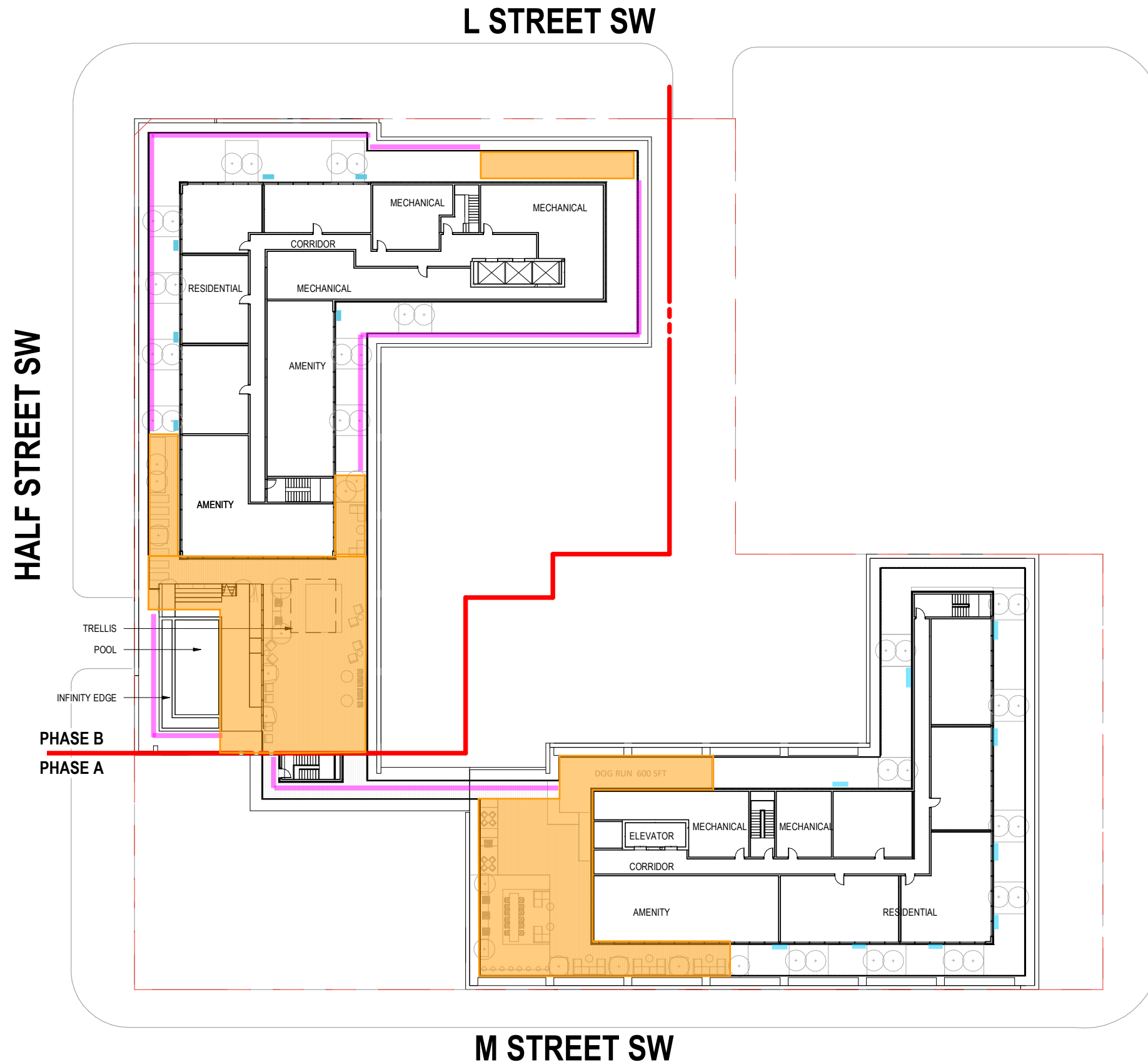
PHASE A & B OF THE PROJECT MAY BE BUILT SIMULTANEOUSLY OR IN PHASES.

THE DESIGN AND LAYOUT OF THE POOL, TRELIS, COURTYARDS, AND OUTDOOR AMENITY AREAS ARE PRELIMINARY AND ARE SHOWN FOR ILLUSTRATIVE PURPOSES ONLY. FINAL LAYOUTS MAY VARY.

- LOW PATH LIGHTING FOR EGRESS
- RECESSED DOWNLIGHTS OR WALL SCONCES
- OVERHEAD DOWNLIGHTS, TO COMPLY WITH 1:1 SETBACK REQUIREMENTS

The lighting shown on these plans is functional illumination for building occupants. There will be no architectural facade lighting.





NOTES:

APPLICANT REQUESTS FLEXIBILITY TO VARY THE LOCATION AND DESIGN OF ALL INTERIOR COMPONENTS, INCLUDING PARTITIONS, STRUCTURAL SLABS, DOORS, RETAIL ENTRANCES, HALLWAYS, COLUMNS, STAIRWAYS, AND MECHANICAL ROOMS, PROVIDED THAT THE VARIATIONS DON'T CHANGE THE EXTERIOR CONFIGURATION OF THE BUILDING.

PHASE A & B OF THE PROJECT MAY BE BUILT SIMULTANEOUSLY OR IN PHASES.

THE DESIGN AND LAYOUT OF THE POOL, TRELIS, COURTYARDS, AND OUTDOOR AMENITY AREAS ARE PRELIMINARY AND ARE SHOWN FOR ILLUSTRATIVE PURPOSES ONLY. FINAL LAYOUTS MAY VARY.

- LOW PATH LIGHTING FOR EGRESS
- RECESSED DOWNLIGHTS OR WALL SCONCES
- OVERHEAD DOWNLIGHTS, TO COMPLY WITH 1:1 SETBACK REQUIREMENTS

The lighting shown on these plans is functional illumination for building occupants. There will be no architectural facade lighting.

